



A joint Catholic & Church of England Academy



CLASS of 2025 PREPARING TO PERFORM

#MAKEITCOUNT

RESPECT

COURAGE

AMBITION

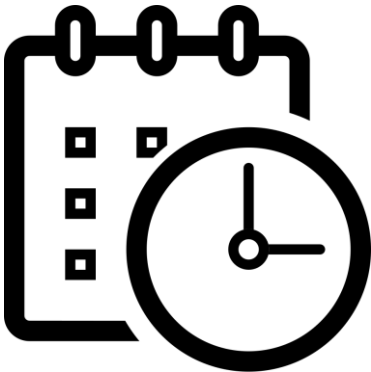
ROUTINES: Creating the Correct Conditions for Revision

Students should aim to revise most weekday evenings in a block of 90 minutes, split into three sections of up to 30 minutes with a 5–10 minute break between each section. Each section of 30 minutes should focus on a different subject/topic as this will make revision more effective.

Students should have a quiet place to revise that is free from distractions. They should be sat at a desk or table and ideally this should be the same place each time they revise.

It is important that students do not have access to electronic devices that will distract them from revision. Encourage them to place their mobile phone in a separate room whilst they are revising and encourage them to avoid energy drinks as this will make it more challenging to maintain concentration.

Establishing a routine now, if students have not already done so, is important. Please remember students should be encouraged to have a healthy balance between working and taking part in hobbies.



FOCUS: How can students prioritise?

Students should identify three priority areas for revision in each subject following feedback on the last set of mock exams.

Students should plan which three topics they will be working on each evening using the template provided. When they are confident that they have mastered a particular piece of knowledge they should tick this off the list.

It is important that students review their revision at the end of each week and identify any topics that may need some additional revision.



SUPPORT: How should students be revising?

We recommend the following revision techniques and resources:

Flash Cards - [Retrieval Practice \(rackcdn.com\)](https://www.rackcdn.com)

Past exam questions – Workbooks are available from our school shop

[Revision Guide Shop - Hope Academy](#)

GCSEPod - [GCSEPod - Hope Academy](#)

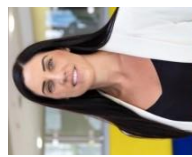


Mental Health & Emotional Wellbeing Support for Students at Hope Academy



Twitter:
[@Hope_Wellbeing](https://twitter.com/Hope_Wellbeing)

Online Support
24/7



Miss Green is the
Senior Mental Health
Leader in school



Please see: your Head of Year,
Pastoral Manager, Head of House or
Miss Green for referrals to help you
get the support that you may need



Listening Ear Counselling
Service - Thursday



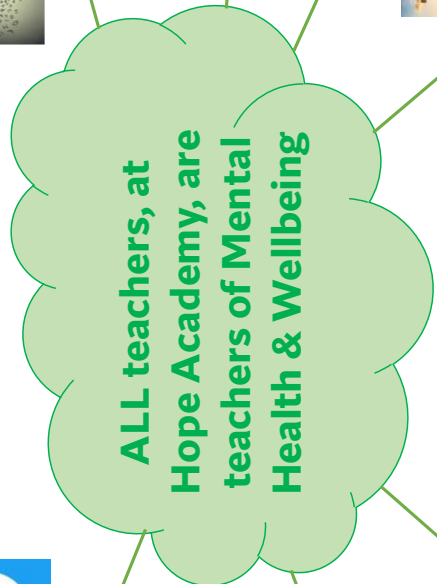
NHS Drop-in
Service every
Tuesday
afternoon with
Katie Wall



Teenage
Advice Zone



Counselling
Service with
Justina
Monday-Friday



Barnardo's Resilience Service
Drop ins, 1-1 Sessions and
Group Work with
Catherine Hill



Thought Space
with Kasia, our
School Chaplain,
daily in the Chapel



RESPECT

COURAGE

AMBITION

HOPE

Subject	Exam Board	% CA	% Exam	Comments	Revision Advice
English Language	AQA	N/A	100%	2 exams Paper 1, Section A (Reading: 20 th Century Fiction) Paper 1, Section B (Descriptive & Narrative Writing) Paper 2, Section A (Reading: Non-fiction) Paper 2, Section B (Writing to Present a Viewpoint) Spoken Language (Non exam assessment) Set/marked by teacher throughout the course – endorsement (0% weighting of GCSE)	<ul style="list-style-type: none"> CGP revision guides GCSE Bitesize English Language Reading texts from online newspapers e.g. The Guardian; The Independent and The Times Mr Bruff YouTube Revision videos: https://www.youtube.com/user/mrbruff Past papers and mark schemes from AQA Revision and intervention classes
English Literature	AQA	N/A	100%	2 exams Paper 1, Section (Shakespeare – <i>Romeo and Juliet</i>) Paper 1, Section B (19 th Century Novel – <i>Jekyll and Hyde</i>) Paper 2, Section A (Modern Text – <i>An Inspector Calls</i>) Paper 2, Section B (Poetry Anthology) Paper 2, Section C (Unseen Poetry)	<ul style="list-style-type: none"> CGP revision guides GCSE Bitesize English Literature Information on the plot/characters/themes for all of the Literature texts: www.sparknotes.com Having your own copies of the set texts is invaluable for revision purposes Mr Bruff YouTube Revision videos: https://www.youtube.com/user/mrbruff Spitting Ink YouTube rap videos for the Poetry Anthology: https://www.youtube.com/channel/UCS1prPhx_a9iZ5pgMbpsDZA Past papers and mark schemes from AQA Revision and intervention classes Graphic organisers Romeo and Juliet/Jekyll and Hyde/An Inspector Calls
Maths	Edexcel	N/A	100%	3 Exams = 33.33% each Paper 1 Non calculator Paper 2 Calculator Paper 3 Calculator	Revision guides, and calculators available to buy from the online shop. Calculators and equipment also available to buy from Maths Office/ class teacher. <ul style="list-style-type: none"> Sparx Maths – online revision www.corbettmaths.com – useful revision website www.mathsgenie.com – useful revision website Revision flash cards available from online shop
Statistics	Edexcel	N/A	100%	2 calculator papers Content can be tested on either paper	<ul style="list-style-type: none"> Statsacademy.co.uk Corbettmaths.com CGP revision guides Pearson revision guides Small number of formulae given in exam on formulae sheet, most needs to be memorised
Biology	Edexcel	N/A	100	2 Exams = 50% each 15% of each paper will examine Practical Skills and 10% Mathematical Skills.	<ul style="list-style-type: none"> CGP revision guides GCSE Bitesize. gcsescience.com Edexcel Website for past papers Doddle Revision and intervention for targeted pupils.
Chemistry	Edexcel	N/A	100	2 Exams = 50% each 15% of each paper will examine Practical Skills and 20% Mathematical Skills.	<ul style="list-style-type: none"> CGP revision guides GCSE Bitesize. gcsescience.com Edexcel Website for past papers Doddle Revision and intervention for targeted pupils.
Physics	Edexcel	N/A	100	2 Exams = 50% each 15% of each paper will examine Practical Skills and 30% Mathematical Skills.	<ul style="list-style-type: none"> CGP revision guides GCSE Bitesize. gcsescience.com Edexcel Website for past papers Doddle Revision and intervention for targeted pupils.

Combined Science	Edexcel	N/A	100	6 Exams – 2 each of Biology, Chemistry and Physics. 15% of each paper will examine Practical Skills and 20% Mathematical Skills.	<ul style="list-style-type: none"> • CGP revision guides • GCSE Bitesize. • gcsciences.com • Edexcel Website for past papers • Doodle • Revision and intervention for targeted pupils.
French/ Spanish	AQA	N/A	100	Terminal examination at the end of the course for all 4 skills as follows: Listening 25% <u>Foundation</u> : Exam - 35 minutes including 5 minutes reading time (40 marks) <u>Higher</u> : Exam - 45 minutes including 5 minutes reading time (50 marks) Speaking 25% <u>Foundation</u> : 7–9 minutes + preparation time (60 marks) <u>Higher</u> : 10–12 minutes + preparation time (60 marks) Reading 25% <u>Foundation</u> : Exam - 45 minutes (60 marks) <u>Higher</u> : Exam - 1 hour (60 marks) Writing 25% <u>Foundation</u> : Written exam - 1 hour (50 marks) <u>Higher</u> : Written exam - 1 hour 15 minutes (60 marks)	<ul style="list-style-type: none"> • www.memrise.com to practise AQA GCSE core vocabulary. • www.language-gym.com • www.languagesonline.org.uk to practise grammar. • www.aqa.org.uk to access sample assessment material. • Duolingo mobile and desktop app (recommended) • BBC GCSE Bitesize revision website
Religious Education	AQA	N/A	100	2 exams at the end of Year 11 50% each. There is no controlled assessment or coursework. Paper 1 50%– Christianity and Judaism: Beliefs and practices Paper 2 50% – Thematic studies	<ul style="list-style-type: none"> • Past exam papers, mark scheme and examiner’s report available at http://www.aqa.org.uk/subjects/religious-studies • DODDLE – New specification revision resources available. • GCSE RE revision app (Revise Better) from the App Store, £2.29. • Get Revising website - over 192,000 ready-made resources, including RE, created by other students such as flash cards and mind maps – or create your own. www.getrevising.co.uk. Free. • Hope RE YouTube channel – revision videos, keywords and exam technique. • SENECA learning revision quizzes for Christianity, Judaism and Thematic Studies.
History	AQA	N/A	100	Two exams at the end of Y11 Paper 1 Section A Germany Democracy and Dictatorship, 1888-1945 Knowledge, second-order concepts and evaluation of interpretations AO1, AO2, AO4. Paper 1 Section B Conflict and Tension, The inter-war years 1919-1939 Knowledge, second-order concepts and analysis of sources AO1, AO2, AO3. Paper 2 Section A Health and the People, c1000 – Present Knowledge, second-order concepts and analysis of sources AO1, AO2, AO3. Paper 2 Section B Elizabethan England c1568-1603 Knowledge, second-order concepts and evaluation of interpretations AO1, AO2, AO4.	<ul style="list-style-type: none"> • Practise writing exam answers. • Timelines to sequence events. • Mind maps to link events to causes, people and dates. • Glossaries to learn terminology and key historical figures. • Revision Guides - book for each module • Utilizing all assessments and model answers provided by department • Ensuring all work is up to date and keeping an excellent class book • Attending all revision and intervention • BBC History website • Using YouTube to watch videos on all key topics <p>Remember to use PIXL Thinking Hard when revising</p>

Geography	AQA A	N/A	100	<p>3 Exams:</p> <p>Paper 1 (Living With The Physical Environment) 35%</p> <ul style="list-style-type: none"> The Challenge Of Natural Hazards The Living World Physical Landscapes In The UK <p>Paper 2 (Challenges In The Human Environment) 35%</p> <ul style="list-style-type: none"> Urban Challenges The Changing Economic World Resource Management (Water) <p>Paper 3 (Geographical Applications) 30%</p> <ul style="list-style-type: none"> Issue Evaluation Fieldwork & Geographical Enquiry 	<ul style="list-style-type: none"> GCSE AQA A Geography 9-1 Revision Guides GCSE Bitesize – Geography GCSE AQA Website for past papers Doddle Bespoke intervention sessions for pupils. Bespoke Case-study intervention booklet. Pixl Geography App Revision World Website S-Cool.co.uk Website Cool Geography Website Get Revising Website
Computer Science	Edexcel (2020)	0	100	<p>2 examinations</p> <p>Paper 1: 50% and Paper 2: 50%</p> <p>Exam details:</p> <p>Paper 1: Principles of Computer Science (1CP2/01) 50% of the qualification (75 marks) Written examination: 1 hour 30 minutes Summer 2022</p> <p>Paper 2: Application of Computational Thinking (1CP2/02) 50% of the qualification (75 marks) Practical onscreen examination: 2 hours Summer 2022</p>	<ul style="list-style-type: none"> Online revision materials are shared on Google classroom, Doddle Learn and Satchel One. Revision guides and workbooks are provided for students (Pearson). Useful websites: <ul style="list-style-type: none"> www.doddlelearn.co.uk/ www.bbc.co.uk/education/subjects/z34k7ty www.sololearn.com https://www.csnews.com/python Raising Achievement Sessions every Thursday in GM3: 3:30pm-4:30pm (TBC) Recommended reading: Pearson Edexcel GCSE (9-1) Computer Science Student Book: £23.99. Revision guides, PLCs, knowledge organisers, etc can all be found here: https://classroom.google.com
Business	AQA	N/A	100	<p>2 exams:</p> <p>Paper 1: Influences of operations and HRM on business activity – 1 hour 45 minutes (50% of GCSE)</p> <p>Paper 2: Influences of marketing and finance on business activity – 1 hour 45 minutes (50% of GCSE)</p>	<ul style="list-style-type: none"> CPG Revision guide AQA GCSE Business – Published by Hodder Useful websites: <ul style="list-style-type: none"> www.doddlelearn.co.uk/ https://www.bbc.co.uk/bitesize/examspecs/zvwb382 http://beta.tutor2u.net/ http://www.revisionworld.com/gcse-revision Attendance at Raising Achievement sessions when scheduled
Art	AQA	100	0	<p>100% coursework portfolio built up over the duration of the course.</p> <p>0% exam CANCELLED</p>	<ul style="list-style-type: none"> Art teacher will provide you with specific topics to study. Use the Photography shared area resources frequently – everything you need is there.
Photography	AQA	100	0	<p>100% coursework portfolio built up over the duration of the course.</p> <p>0% exam CANCELLED</p>	<ul style="list-style-type: none"> Art teacher will provide you with specific topics to study. Use the Photography shared area resources frequently – everything you need is there.
Drama	AQA	40	60	<p>40% Written Exam:</p> <p>Section A: multiple choice (4 marks) Section B: four questions on a given extract from the set play chosen (44 marks) Section C: one question (from a choice) on the work of theatre makers in a single live theatre production (32 marks).</p> <p>20% Performance (or performance support) Exam:</p> <p>Students will perform 2 extracts from one play.</p> <p>40% Devising Drama:</p> <p>Devising log (60 marks) Devised performance (20 marks)</p>	<ul style="list-style-type: none"> Regular attendance to rehearsals Exemplar material and example question papers and mark schemes to be shared with class by teacher. Some materials may be found on the AQA website. Watch a variety of performances (looking at different styles and practitioners). Read a variety of plays (looking at different styles and practitioners). BBC Bite size AQA section for Drama YouTube- Blood Brothers production Blood Brother revision guide

Physical Education	OCR	40%	60%	60% Written Exam Paper 1 - Physical factors affecting performance Paper 2 - Socio-cultural issues and sports psychology 30% Practical performance Performance in 1 Team, 1 Individual and 1 of either sports 10% Analysis & evaluation of performance coursework	<ul style="list-style-type: none"> Attend extra-curricular sports clubs Use BBC bitesize www.teachpe.com Past papers and exam questions
Design and Technology	Edexcel	50	50	A 20 page Digital portfolio from a choice of 3 design contexts given at the end of year 10. A 2-hour examination at the end of year 11. Exam contains a 10% science and mathematics element.	<ul style="list-style-type: none"> Edexcel website Doddle learn BBC Bitesize Catch up and intervention sessions (Teacher will provide times and dates).
Level 2 Technical Award in Child Development and Care	NFCE CACHE		Pass 24/ 40	125 GLH External Exam 2 Core units Unit 1: Introduction to working with children 0-5 years Unit 2: Development and well-being of children 0-5 years	<ul style="list-style-type: none"> Teacher led tasks supported by assignment briefs Text book Dynamic learning website Intervention (every lunchtime)
BTEC Technical Award in Digital IT	Pearson	66.6	33.3	3 Components Component 1: Exploring User Interface Design Principles and Project Planning Techniques Internal Assessment (33.3%) Component 2: Collecting, Presenting and Interpreting Data Internal Assessment (33.3%) Component 3: Effective Digital Working Practices External Assessment (33.3%)	<ul style="list-style-type: none"> There are lots of resources to support your learning. The main websites are... Know It All Ninja https://www.knowitallninja.com/ Google Classroom https://classroom.google.com Recommended reading... Revise BTEC Tech Award Digital Information Technology Revision Guide by Alan Jarvis £5.99
BTEC Level 1/2 Tech Award in Enterprise	Pearson	60%	40%	3 components: Component 1 (Exploring Enterprises) and Component 2 (Planning for and Pitching an Enterprise Activity) are internally assessed (30% each of final grade) Component 3 (Promotion and Finance for Enterprise) is an externally assessed synoptic case study/assessment (2 hours) (40% of final grade)	<ul style="list-style-type: none"> https://qualifications.pearson.com/en/qualifications/btec-tech-awards/enterprise.html BTEC Tech Award Enterprise Student Book 2nd edition – published by Pearson Revise BTEC Tech Award Enterprise Revision Guide – published by Pearson Doddle learn BBC Bitesize Catch up and intervention sessions (Teacher will provide times and dates).
Level 2 Technical award in Engineering	Edexcel	60	40	3 units of work: The first 2 units are internally assessed: Exploring Engineering sectors and design applications. Investigating an engineering project. The following unit is an external assessment which is undertaken in a classroom: Responding to an Engineering brief.	<ul style="list-style-type: none"> https://qualifications.pearson.com/en/qualifications/btec-tech-awards/engineering.html Pearson website Doddle learn BBC Bitesize Catch up and intervention sessions (Teacher will provide times and dates).
Cambridge National Sports Studies	OCR	75%	25%	4 units, 3 of which are internally assessed and 1 unit is an externally assessed exam (R051) -R051: Contemporary Issues in sport -R052: Developing sports skills -R053: Sports leadership -R054: Developing knowledge and skills in outdoor activities	<ul style="list-style-type: none"> Use BBC bitesize www.teachpe.com Revision guides available from student services £3 each Attend extra-curricular sports clubs

Hospitality and Catering Level 1 / 2	WJEC	60	40	<ul style="list-style-type: none"> • <u>Unit 1 - The Hospitality and Catering Industry</u> - external assessment online e-assessment. • For the online e-assessment students will need to gain knowledge of all parts of the industry and be able to propose new hospitality and catering provisions for a particular location. Students should be able to identify different types of establishment and job roles to determine the best option. • <u>Unit 2 – Hospitality and Catering in Action</u> - Internal assessment: Controlled Assessment Task. • This unit is based around a given brief in which students will need to complete all the Assessment Criteria; this will form their coursework, along with a practical assessment. Students will use their knowledge gained over the course to carry out. 	<ul style="list-style-type: none"> • Online specification available: • https://www.wjec.co.uk/qualifications/hospitality-and-catering/ • (Book) Hospitality and Catering Level 1 / 2 = Anita Tull
---	------	----	----	--	--

<h2 style="text-align: center;">Key Contacts</h2>	
Maths	
Science/Child Development/Health and Social Care	
Business/Computer Science/Digital IT/ICDL	
Music/Art/Photography/Drama	
PE	
English	
RE	
Geography	
History	
Spanish/French	
Technology	
Head of KS4	
Head of Year 11	

GCSE Year Checklist

- **AO1:** Develop ideas through investigations, demonstrating critical understanding of sources.
- **AO2:** Refine work by exploring ideas, selecting and experimenting with appropriate media, materials, techniques and processes.
- **AO3:** Record ideas, observations and insights relevant to intentions as work progresses.
- **AO4:** Present a personal and meaningful response that realises intentions and demonstrates understanding of visual language.

Component 1: Portfolio: Marked in school and moderated by AQA		
<p>Completed in year 10.</p> <p>96 marks</p> <p>60% of GCSE</p>	<p>A portfolio that in total shows explicit coverage of the four assessment objectives. It must include a sustained project evidencing the journey from initial engagement to the realisation of intentions and a selection of further work undertaken during the student's course of study.</p>	<p>Non-exam assessment (NEA) set and marked by the school/college and moderated by AQA during a visit.</p> <p>Internal deadline set.</p> <p>Moderation will normally take place in June 2025.</p>
Component 2: Exam		
<p>10-hour control exam in school.</p> <p>96 marks</p> <p>40% of GCSE</p>	<p>Students respond to their chosen starting point from an externally set assignment paper relating to their subject title, evidencing coverage of all four assessment objectives.</p>	<p>Non-exam assessment (NEA) set and marked by the school/college and moderated by AQA during a visit.</p> <p>Internal deadline set.</p> <p>Moderation will normally take place in June.</p>

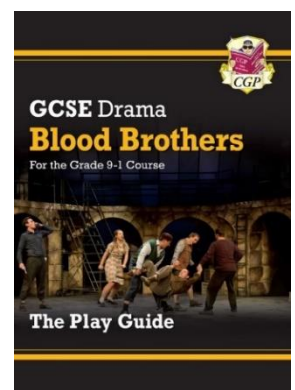
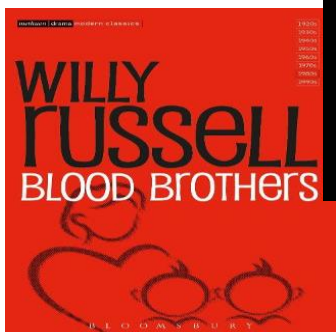
Assessment objective weightings for GCSE Art and Design

Assessment objectives (AOs)	Component weightings (approx %)		Overall weighting (approx %)
	Component 1	Component 2	
A01	15	10	25
A02	15	10	25
A03	15	10	25
A04	15	10	25
Overall weighting of components	60	40	100

GCSE Drama Checklist



Comp 1: Written Exam summer 2024 (80 marks)	
Section A Theatre styles 4 marks	Revise staging styles and stage directions. BBC Bitesize.
Section B Blood Brothers 44 Marks Blood Brothers revision guide- In school library. Lots of exam questions in this	<ol style="list-style-type: none"> 1. Read Blood Brothers again or watch clips YouTube. 2. Create a timeline of important scenes. 3. AQA GCSE Drama website past papers for exam questions. 4. Revise acting skills/techniques using glossaries in folder. 5. GCSE POD. Texts in practice section.
Section C Live Theatre review 32 Marks The Women in Black	<ul style="list-style-type: none"> - Online resources via class charts -Flashcards for scenes and lighting -Key scenes and characters revision -Spider diagrams of costumes and set designs. - Clips on YouTube - Practices Q for timing (45 mins) -AQA website questions or I can provide generic questions. -Live Theatre review revision guide
Comp 2: Devising Drama: Internal Exam and coursework (80 Marks)	
Devising Performance 20 marks	Recording completed.
Devising coursework section x 3 pieces 20 marks	
Comp 3: Scripted Performance - March 28th EXAM 20 %	
Extract 1 20 marks	Recorded in exam conditions in school
Extract 2 20 marks	Recorded in exam conditions in school
<u>This exam has a visiting examiner aiming for March time</u>	





BTEC Digital IT - Preparing to Perform

USEFUL RESOURCES

Google Classroom

<https://classroom.google.com>

Google Classroom

<https://classroom.google.com>

Know It All Ninja

www.knowitallninja.com/

Past papers

Revision guide

Knowledge organisers

REVISION SESSIONS AND SUPPORT

Raising Achievement Sessions (RAS) every **Wednesday**. 3:10-4:10pm in GM3

SPECIFICATION DETAILS

BTEC Tech Award in DIT (2022)

EXAM CONTENT

Component 1 (internal)

Interface design principles and project planning

Component 2 (internal)

Collecting, presenting and interpreting data

Component 3 (external)

Effective, Digital working practices

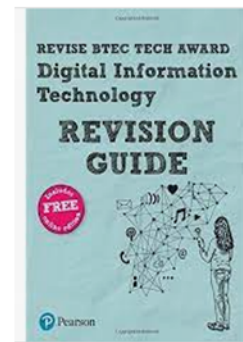
Exam Date: May 2024

REVISION TIPS

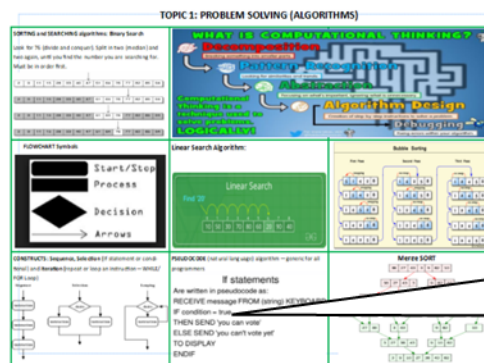


Use know it all ninja to support all 3 components.

GCSE Pod has a wide range of high quality mini videos for each sub topic that links with the Personal Learning Checklist (PLC). These can be used as therapy to close gaps in knowledge identified in the PLC.



Use the revision guide to revisit the unit content and revise key terms and computing concepts.



Knowledge organisers are a great way to recall key information about each topic.



BTEC Enterprise - Preparing to Perform

USEFUL RESOURCES

Google Classroom
<https://classroom.google.com>

Know It All Ninja
www.knowitalninja.com/

Past papers
Revision guide
Knowledge organisers

EXAM CONTENT

Component 1
(internal)
Exploring Enterprises

Component 2
(internal)
**Planning for and Pitching
an Enterprise Activity**

Component 3
(external)
**Promotion and Finance
for Enterprise**

Exam Date: May 2024

REVISION SESSIONS AND SUPPORT

Raising Achievement Sessions (RAS) every **Wednesday, 3:10-4:10pm** in GM3

SPECIFICATION DETAILS

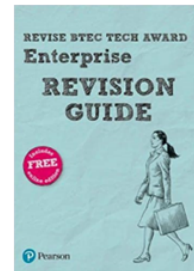
BTEC Tech Award in Enterprise (2022)

REVISION TIPS



Use know it all ninja to support all 3 components.

GCSE Pod has a wide range of high quality mini videos for each sub topic that links with the Personal Learning Checklist (PLC). These can be used as therapy to close gaps in knowledge identified in the PLC.



Use the revision guide to revisit the unit content and revise key terms and computing concepts.

Knowledge Organiser - C1

COMPONENT 1 - Exploring Enterprises

CUSTOMER NEEDS

Learning Aim B Explore how market research helps enterprise meet customer needs & understand

Section 1

Why is it important to identify customer needs?

Customers are vital if a business is going to be successful, therefore the entrepreneur must find out about customer wants and needs. This can be done via market research.

What 3 factors are important when identifying customer requirements?

1. **Value:** Customers will want 'good value' goods and services. They want to feel they have got good quality for what they have paid for the good or service.

2. **Quality:** They must respond to enquiries readily to offer good customer service, this could be a question or a complaint. Customers want to feel they are well thought of as they're spending money with you, they want to have confidence in you and feel listened to. They will tell others how they feel about your enterprise.

3. **Information:** Customers are most likely to repeat purchase if they understand what is being offered and its clear to understand. Sometimes (for example when buying a car) you can confuse people and put them off. There are also those who expect to be given clear information on what they're expecting, not providing clear information can lead to fines, court and prison depending on the severity.

What is 'after sales' service?

After sales is what the enterprise offers the customer has left with their purchase. This can be as simple as checking if they can help the customer in any way (e.g. with a new piece of technology) or finding out if they're happy with their recent purchase (this might be in the form of a 360 questionnaire). Some customers might want company products (e.g. Trust Pilot, Trip Advisor etc.).

How can a business provide after sales service?

- **Repeats and Maintenance:** This might be offered when you get a new car.
- **Delivery Information / Tracking:** This might be in the form of providing updates on where the delivery is and how it can be self-tracked via SMS, it might also be the enterprise checking the delivery went smoothly and the customer is happy.
- **Warranty:** This is the offering of repairs for a specified amount of time after the sale if the product breaks.

Section 2

Identifying customer needs can only be done once you know who your customers are. The enterprise has to think carefully about customer needs and how they are likely to buy.

If a need is identified and met then it is said to be satisfied. If you don't identify needs or providing goods and services customers don't want, this might be a problem! Think beyond cash flow.

How can a product be linked to a customer?

Linking customers and products well means the enterprise is using its time and resources well.

The age of the customer (What do most people of your age like?)

The gender of the customer (What do males/females like?)

The income of the customer (What can they afford? What disposable income do they have?)

Linking products and customers

Knowledge organisers are a great way to recall key information about each topic.

